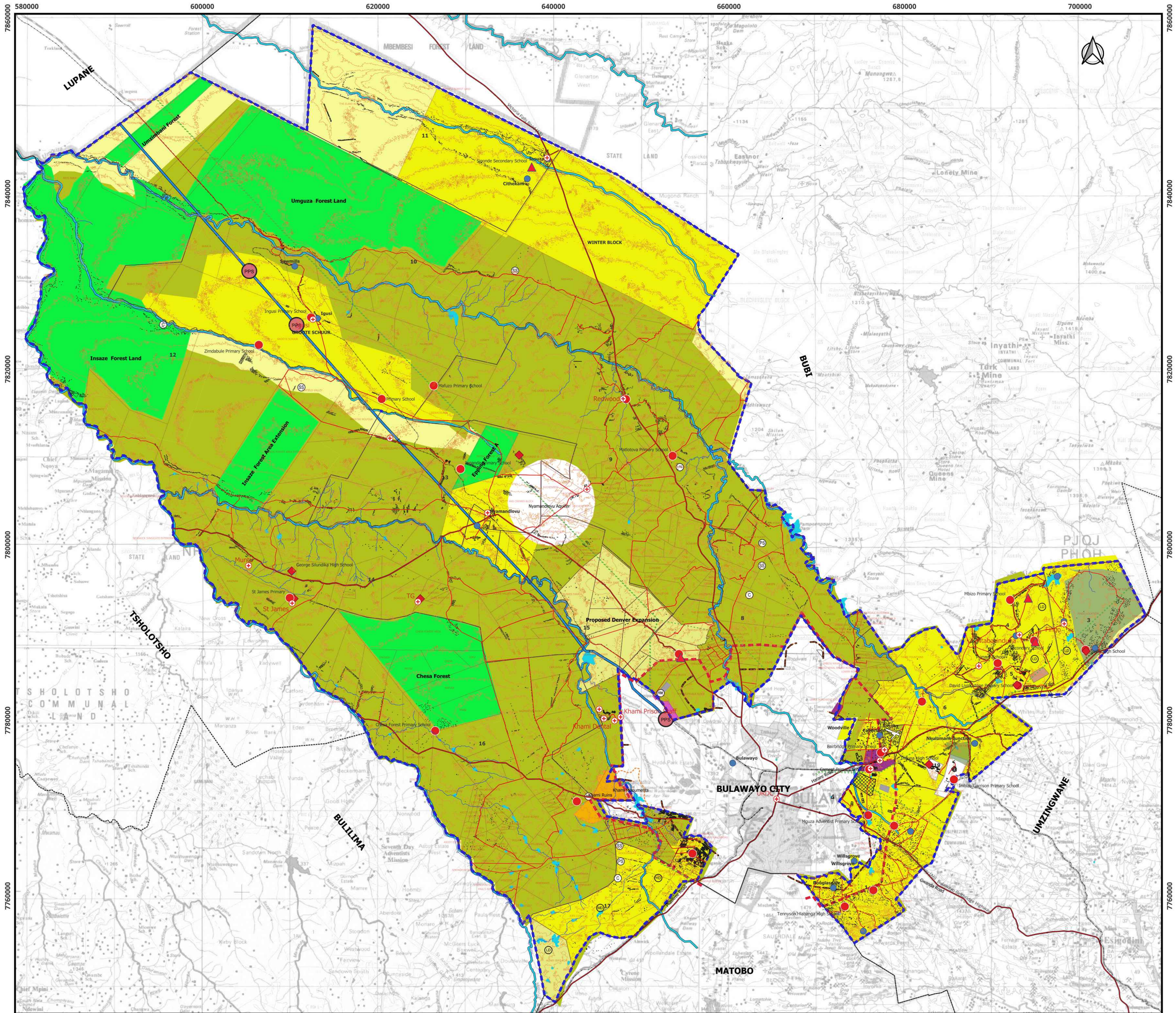


PROPOSALS

LEGEND

- Homesteads
- ⊕ Health Facility
- Schools
- ◆ High School
- Primary School
- ▲ Secondary School
- Business Centre
- ⊕ Vocational Training Center
- ⊕ National Monument
- ⊕ Low Density
- ⊕ Medium Density
- ⊕ High Density
- ⊕ Proposed Primary School
- ⊕ Proposed Secondary School
- ⊕ Proposed Clinic
- ⊕ PPS Proposed Pump Station
- Cemetery
- Road
- Railway
- Powerline
- Stream
- Proposed Gwayi Shangani Trunk Water Line
- Contour
- Airport
- Barracks
- River 100m Buffer
- Dam 100m Buffer
- Road 50m Buffer
- Khami Monuments
- Proposed Khami Buffer Zone
- Proposed Khami Boundary Extension
- Residential
- Residential Settlements
- District Boundary
- Ward Boundary
- Bulawayo Master Plan Boundary
- Proposed Road
- Cemety
- Industries
- General Industry
- Light Industry
- Mining Claims
- Proposed Industrial



PREPARED BY  URBAN DEVELOPMENT CORPORATION	PREPARED FOR  UMGUZA RURAL DISTRICT COUNCIL
DEPARTMENT OF SPATIAL PLANNING AND DEVELOPMENT MATEBELELAND NORTH PROVINCE	
ADOPTED COUNCIL CHAIRPERSON CHIEF EXECUTIVE OFFICER (CEO)	APPROVED MINISTRY OF LOCAL GOVERNMENT AND PUBLIC WORKS
DATE SCALE: 1:140 000 	DATE COORDINATE SYSTEM: WGS84 UTM 35 SOUTH PLAN NUMBER: